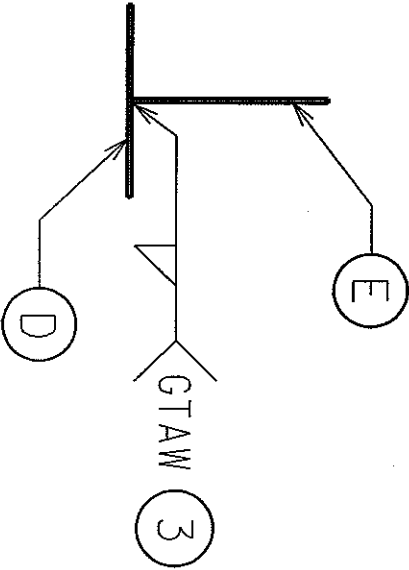
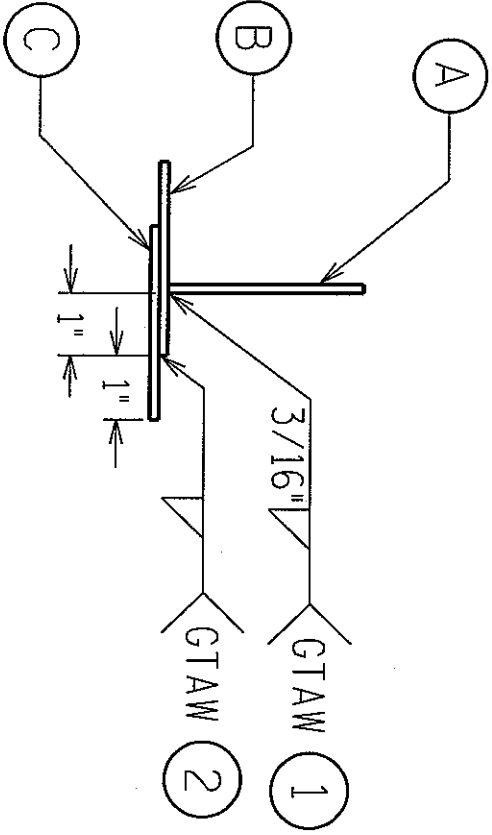


WELDING PROCEDURES			
WELD PROCESS	POSITION	SPECIAL INSTRUCTION	
1	GTAW	2F	1/16 ER70S-6
2	GTAW	2F	1/16 ER70S-6
3	GTAW	2F	0.045 ER 308 L

LINCOLN[®]
ELECTRIC



PART NO.	QTY.	DESCRIPTION
E	1	3" X 6" X 16 GA. S.S. PLATE
D	1	3" X 6" X 16 GA. S.S. PLATE
C	1	3" X 6" X 10 GA. STL PLATE
B	1	3" X 6" X 10 GA. STL PLATE
A	1	3" X 6" X 10 GA. STL PLATE

REGIONAL SKILLS USA

GTAW

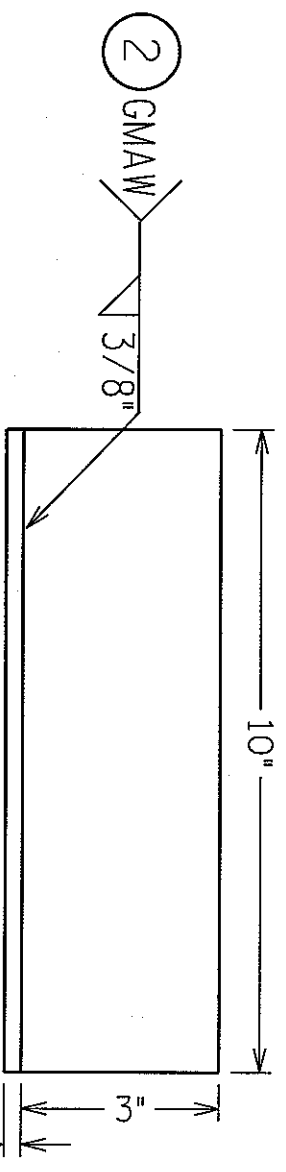
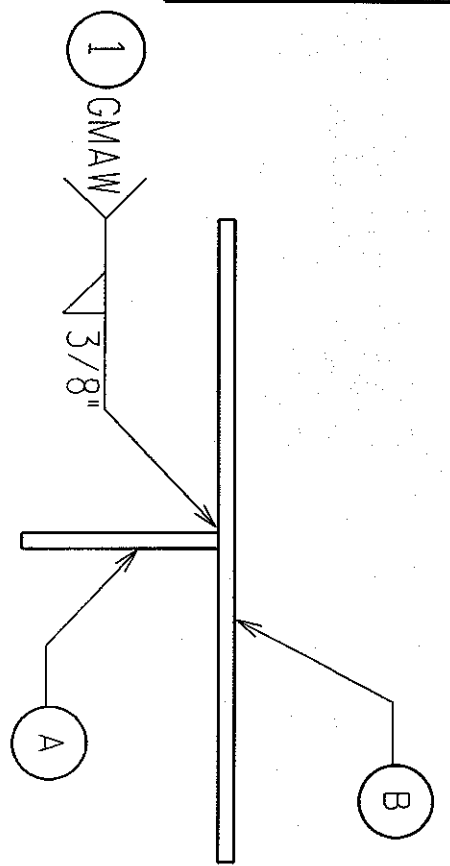
DRAWN	K. NELSON	DATE	12/11/06	SCALE	1 = 3
CHK'D	O.K.				
MACH NO.	LOC.				
BILL OF MATERIALS					

SW-XXXX-XXX -

WELDING PROCEDURES

WELD	PROCESS	POSITION	SPECIAL INSTRUCTION
1	GMAW	4F	0.035 ERTOS-6
2	GMAW	2F	0.035 ERTOS-6

LINCOLN[®]
ELECTRIC



FIRST PASS = 10" LONG
SECOND PASS = 8" LONG
THIRD PASS = 6" LONG

PART NO.	Qty.	DESCRIPTION
B	1	3" X 10" X 1/4" STL PLATE
A	1	3" X 10" X 1/4" STL PLATE

BILL OF MATERIALS

GMAW

REGIONAL SKILLS USA

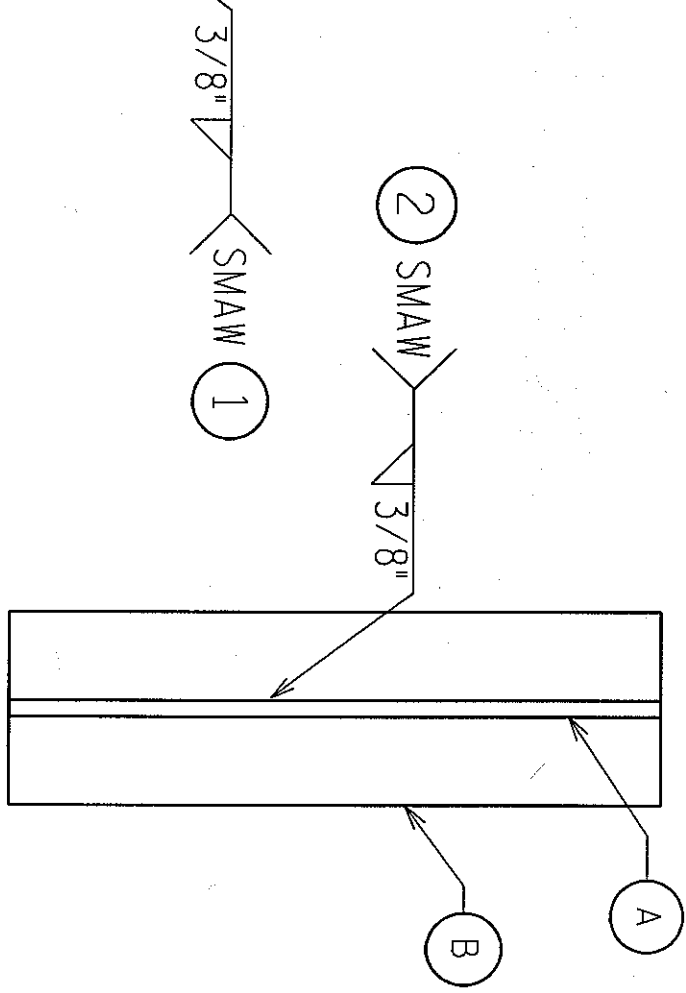
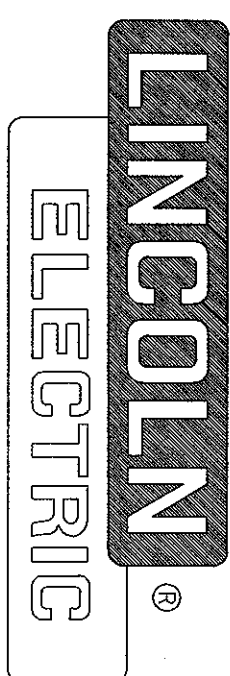
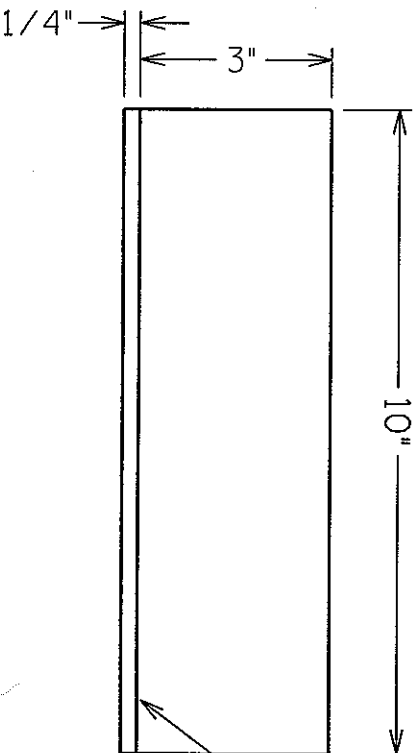
DRAWN	K. NELSON	DATE	12/11/06	SCALE	1 = 3
CHK'D	O.K.				
MACH NO.	LOC.				

SW-XXXX-XXX

WELDING PROCEDURES

WELD	PROCESS	POSITION	SPECIAL INSTRUCTION
1	SMAW	2F	1/8 E6010
2	SMAW	3F	1/8 E7018

FIRST PASS = 10" LONG
 SECOND PASS = 8" LONG
 THIRD PASS = 6" LONG



PART NO.	Qty.	DESCRIPTION
B	1	3" X 10" X 1/4" STL PLATE
A	1	3" X 10" X 1/4" STL PLATE
BILL OF MATERIALS		

SMAW

REGIONAL SKILLS USA

DRAWN	K. NELSON	DATE	12/11/06	SCALE	1=3
CHK'D	O.K.				
MACH NO.	LOC.				

SW- XXXX-XXX