



CAREER PATHWAYS SHOWCASE



Contest Date(s):

April 22, 2021

(Orientation will begin at 9:00am)

Contest Type: VIRTUAL

**(All contest types are listed on the website. YOU NEED TO BE FAMILIAR
WITH BOTH THIS DOCUMENT AND THAT DOCUMENT.)**

Zoom Contest Link(s):

**[https://ohioskillsusa-
org.zoom.us/j/97540777146?pwd=ZVNLbmFTaUJNbFNGdDZ5YnQ5OCtPZz09](https://ohioskillsusa-org.zoom.us/j/97540777146?pwd=ZVNLbmFTaUJNbFNGdDZ5YnQ5OCtPZz09)**

Meeting ID: 975 4077 7146

Passcode: 781824

CAREER PATHWAYS SHOWCASE

PURPOSE

Students promote their career-technical program to their community and industry by developing a learning-based project that benefits their school, industry or community. They also develop a display to use in their community to explain the project, their studies and its benefits.

ELIGIBILITY (TEAM OF 3)

Eligibility in accordance with the SkillsUSA Ohio Program Guidelines. Teams should consist of 3 persons enrolled in the same Career Pathway.

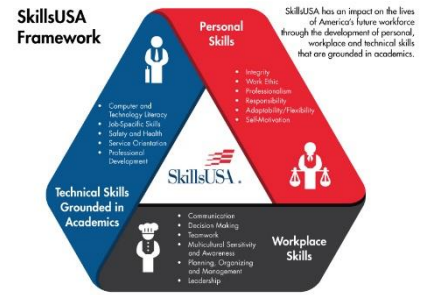
ORIENTATION

Orientation is at 9:00am. Orientation is for contestants only.

CLOTHING

Official SkillsUSA attire:

Men	Official red blazer, jacket or sweater; black dress slacks; white dress shirt; plain black tie with no pattern or SkillsUSA black tie; black socks and black shoes.
Women	Official red blazer, jacket or sweater; black dress skirt (knee length) or slacks with businesslike white, collarless blouse or white blouse with small, plain collar that may not extend onto the lapels of the blazer; black sheer or skin-tone seamless hose and black dress shoes.



TOOLS PROVIDED BY CONTESTANTS

- One copy of a 1-page typed personal résumé.
- Computer with high-speed internet capability and camera to access Zoom. The minimum recommended internet bandwidth speeds for joining Zoom meetings is 2.0 Mbps up and down.
- Schools are responsible for all equipment to be used in the display and presentation, including tools that will be used to demonstrate the size of the display.

SPECIAL INFORMATION:

- No smart watches; phones are permitted only when being operated as a secondary camera.
- Only the first three registered members will be recognized on stage at the awards ceremony.
- Only the three students presenting are permitted in the display area.

CAREER PATHWAYS SHOWCASE

DISPLAY REQUIREMENTS

1. The Display should be a maximum of 7'10" wide x 8' long.
2. Displays may not utilize hazardous or flammable materials or gas-powered items.
3. The team must be able to move the display under their own power. Fork lifts or dollies are not available.
4. If the display contains equipment with oil/grease, etc. a tarp should be placed under the item.

Showcases will be evaluated based on the SkillsUSA Championships Technical Standards. SkillsUSA sent out a clarification to all State Associations that participate in the Career Pathways Showcase regarding a change in eligibility for the National Competition effective 2019. States will only be eligible to send their top gold medal team in each of the 6 National Career Pathways. Therefore, we will award 1 team Gold Medal in each of the following six categories:

Arts and Communications

- ❖ Arts, Audiovisual Technology and Communications

Business Management and Technology

- ❖ Business Management and Administration
- ❖ Finance Services
- ❖ Information Technology
- ❖ Marketing, Sales and Services



CAREER PATHWAYS SHOWCASE



Human Services

- ❖ Government and Public Administration
- ❖ Law, Public Safety and Security
- ❖ Education and Training Services
- ❖ Human Services
- ❖ Hospitality and Tourism

Health Services

- ❖ Health Science

Industrial and Engineering

- ❖ Architecture and Construction
- ❖ Manufacturing
- ❖ Science, Technology and Math
- ❖ Transportation Distribution and Logistics

Natural Resources/Agriculture and Food

- ❖ Agricultural, Food and Natural Resources

SCOPE OF THE CONTEST

The contest will be judged based on the criteria established in the current year's National Technical Standards, which are updated annually. National Technical Standards are accessed through your Professional SkillsUSA Membership benefits by logging on to your SkillsUSA account at <https://www.skillsusa-register.org/Login.aspx>.