



CABINETMAKING



Contest Date(s):

April 5-16, 2021

(Specific competition day(s) will be pre-assigned to competitors. Orientation will begin at 9:00am on your specifically assigned contest day(s), unless otherwise specified by the coordinator/judge(s).)

Contest Type: IN-SCHOOL JUDGED

(All contest types are listed on the website. YOU NEED TO BE FAMILIAR WITH BOTH THIS DOCUMENT AND THAT DOCUMENT.)

MATERIALS WILL NEED TO BE PICKED UP BY THE SCHOOL AT THE LOCAL LOWES STORE IDENTIFIED BY THE TECHNICAL COMMITTEE PRIOR TO THE CONTEST DAY. YOU WILL RECEIVE A CONFIRMATION NUMBER AND PICKUP LOCATION ONCE THE ORDER IS PLACED.

YOU WILL NOT BE PERMITTED TO USE ANY MATERIALS OTHER THAN THOSE PROVIDED

PURPOSE

To evaluate each contestant's preparation for employment and to recognize outstanding students in the field of Cabinetmaking.

ELIGIBILITY

1 Contestant per school based determined in accordance with the SkillsUSA Ohio Program Guidelines.

ORIENTATION

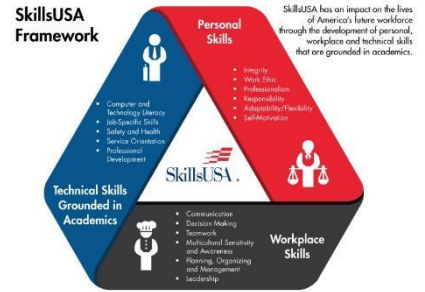
Specific competition day(s) will be pre-assigned to competitors. Orientation will begin at 9:00am on your specifically assigned contest day(s), unless otherwise specified by the coordinator/judge(s).

CLOTHING REQUIREMENTS

Approved Skills USA Uniform or Work Shirt & Pants. No Logos of Any Kind to be visible EXCEPT Approved Skills USA Logo. Shirts must be tucked, long sleeves to be rolled past elbow. Pants must have belt. Only work shoes or work boots will be allowed. Baseball type hats are allowed, any logo must be covered with tape. No loose jewelry of any kind. Cell Phones, Smart watches or like devices Will Not Be Allowed within the Contest Area.

TOOLS PROVIDED BY CONTESTANTS

- **One copy of a 1-page typed personal résumé**
- 1 Safety Glasses: Clear, No Tinted Glasses Allowed
- 4 Particle / Dust Masks
- 2 #2 Pencils, Sharpened
- 2 Tape Measure with English Scales
- 1 Folding Ruler (Optional)
- 1 Framing Square
- 1 12" or 16" Combination Square
- 1 Sliding Bevel Gauge for Setting Blade Angles
- 1 Scratch Awl
- 1 Nail Apron
- 1 Claw or Rip Hammer
- 1 set Chisel Set: 1/4" thru 1"
- 1 Utility Knife & Extra Blades
- 1 Small Back Saw or Dovetail Saw
- 1 Sanding Block
- 2 120 Grit Sandpaper Sheets or Discs for Sanding Block
- 2 150 Grit Sandpaper Sheets or Discs for Sanding Block
- 2 24" or 30" Bar Clamps
- 2 8" or 10" Hand Screw Clamps or C-Clamps
- 2 2" Spring Clamps
- 1 8 oz. Bottle of Wood Glue
- 4 Rags for Cleaning Glue
- 1 Water Container with Lid for Cleaning Glue
- 1 10" or 12" Electric Miter Saw
- 2 Saw Horses with Saw Supports or Miter Saw Stand
- 1 25' UL Approved Extension Cord, May Include One 3-Way Outlet Head
- 1 Electric Drill or Battery Operated Drill with Extra Battery & Charger
- 1 Twist Drill Counter Sink Bit for # 8 Flat Head Screws
- 1 Drill Driver Set with #2 Phillips & #2 Square
- 1 Electric Iron for Applying Iron-On Veneer Edge Banding





CABINETMAKING



- 1 Steel Roller or Veneer Hammer or Stiff Veneer Scraper
- 1 Small Block Plane or Low Angle Plane
- 1 Calculator (No Cell Phones, Smart Watches or like devices)

Only Tools on this list will be permitted. NO EXCEPTIONS.

TOOLS PROVIDED BY TECHNICAL COMMITTEE:

- All other tools, equipment and supplies will be furnished by the technical committee.

MATERIALS WILL NEED TO BE PICKED UP BY THE SCHOOL AT THE LOCAL LOWES STORE IDENTIFIED BY THE TECHNICAL COMMITTEE PRIOR TO THE CONTEST DAY. YOU WILL RECEIVE A CONFIRMATION NUMBER AND PICKUP LOCATION ONCE THE ORDER IS PLACED.

SPECIAL INFORMATION

- No smart watches or phones are permitted during the contest

SCOPE OF THE CONTEST

The contest will be judged based on the criteria established in the current year's National Technical Standards, which are updated annually. National Technical Standards are accessed through your Professional SkillsUSA Membership benefits by logging on to your SkillsUSA account at <https://www.skillsusa-register.org/Login.aspx>.