



Automotive Refinishing Technology



Contest Date(s):

Online Testing Date ONLY for ALL competitors - March 26, 2021
(Testing window will open at 9:00am; students will have 60 minutes)

Live Off-Site Contest Dates - March 30, 2021

**See the SkillsUSA Ohio State Championships Page to see the specific,
assigned date(s)/time(s) for each competitor/school**

Classmarker Online Testing Link (9:00am on 3/26/21):

<https://www.classmarker.com/online-test/start/?quiz=qrd6053c3e2baca2>

Contest Type: LIVE OFF-SITE (with VIRTUAL test in advance)

Delaware Area Career Center

4565 Columbus Pike

Delaware, OH 43015

(Strict COVID-19 Protocols will be in place)

(Waivers and Questionnaires are located on the State Championships Webpage)

Contestants must:

- Submit COVID-19 Waiver a minimum of 24 hours in advance to:
<https://www.dropbox.com/request/otCWzViGM9l89cian7Lq>
- Submit the COVID-19 Questionnaire 24 hours in advance to:
<https://www.dropbox.com/request/Xt0hUQh0MuL7fsPJc1BX>

(contestants will be required to complete this again the morning of the contest)

- **Masks must be worn at ALL TIMES**
- **ONLY CONTESTANTS** will be allowed into the contest space
 - Temperatures will be taken upon arrival

VIOLATION of any of these conditions may result in contestant(s) being unable to compete and/or being sent home

Automotive Refinishing Technology

PURPOSE

To evaluate each contestant's preparation for employment and to recognize outstanding students for excellence and professionalism in the field of collision repair technology.

TESTING: There will be a written knowledge test administered online via the Classmarker link provided. The testing window will open at 9:00am on March 26, 2021; students will have 60 minutes to complete the test.

ELIGIBILITY

3 Contestants per region based on regional competitions, in accordance with the SkillsUSA Ohio Program Guidelines.

ORIENTATION

Per assigned contest times

CLOTHING REQUIREMENTS

Long pants and work shirt (school appropriate with not school name shown) black, brown, or tan leather work shoes safety shoes. Safety glasses with side shields or goggles (prescription glasses may be used only if they are equipped with side shields. If not, they must be covered with goggles).

TOOLS PROVIDED BY CONTESTANTS

- One copy of a 1-page typed personal résumé

Extra air hose, 25'
Dual action sander
Sanding block
Pliers
Clipboard
Vise grips (at least 2 pairs)
Nitrile gloves

Proper Paint Suit (full cover)
Calculator (battery operated only)
Work shoes (no athletic shoes)
Safety glasses
2 spray guns – 1 for color, 1 for clear
2 - #2 pencils (sharpened)
Gray scuff pads

Charcoal paint respirator 3M or equivalent (Dual Cartridge) – Please bring proof of fit test (will not disqualify if not supplied)
D.A. Sandpaper – 180 grit, 320 grit – 10 sheets each – 600 & 800

Hi-Flow

DeVilbiss: HC 4419
Milton: 762/810
RBL: 612

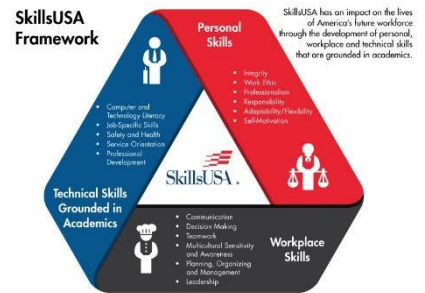
Prevost: ERP 76251 (male)
ERP 76201 (female)

TOOLS PROVIDED BY TECHNICAL COMMITTEE

PPG – EHP basecoat and related reducers – see spray gun chart (DOX440)
PPG – DC 2000 clear and related hardeners and reducers

SPECIAL INFORMATION

- No smart watches or phones are permitted during the contest.
- Our Technical Committee is in the process of redefining this contest based on the National Technical Standards. You should be prepared to do anything identified in the Technical Standards.
- Potential Planned Areas Include:
Painting and Refinishing Skills



Automotive Refinishing Technology

Paint Code ID
Masking
Soft skills
ASE Test
Estimating

SCOPE OF THE CONTEST

The contest will be judged based on the criteria established in the current year’s National Technical Standards, which are updated annually. National Technical Standards are accessed through your Professional SkillsUSA Membership benefits by logging on to your SkillsUSA account at <https://www.skillsusa-register.org/Login.aspx>.



****** - For hot, drier climates, better results may be achieved using a larger-sized air cap / fluid tip and/or a lower PSI when applying waterborne basecoat. For more humid climates, a smaller-sized air cap / fluid tip and/or a higher PSI may be more desirable. The advantage of either of these adjustments is proper overall wetting of the basecoat.

NOTE: PPG Industries does NOT endorse any particular type or brand of application equipment. The above recommendations are only a general reference and should be used solely as a starting point. Your particular spray environment and application technique may require slight adjustments. All equipment was tested using “full trigger” during application with regulators approved by each gun manufacturer.

Manufacturer	Model	Air Cap	Fluid Tip	Coverage Coat	Control Coat
CAUTION - To meet regulations in Compliant areas and EPA 6H requirements, all spray equipment should use regulators approved by the corresponding gun manufacturer.					
3M / Accu-Spray (Regulator #16574)	07HS	726	1.8	35 PSI	22 PSI

Automotive Refinishing Technology

Anest Iwata (Regulator #8131) (Air Flow Control Valve #8130B)	W400 LV	W400LV	1.3	20 PSI	12 - 14 PSI **
	LPH400 LV	Extreme	1.3	16 PSI	14 PSI
	LS400	Platinum	H1.1 / H1.2 **	25 PSI	20 PSI
DeVilbiss (Regulator #HAV512)	CVI	510	1.2 / 1.3 **	26 PSI	16 PSI
	Tekna	909	1.3	24 PSI	14 PSI
	Tekna	7E7	1.2 / 1.3 **	22 PSI	14 PSI
	Tekna Pro Lite	TE10/TE20 **	1.2	26 PSI	17 PSI
	Tekna Pro Lite	HV30	1.3	24 PSI	14 PSI
Sata (adam2 #160853) (Micrometer #27771)	SATAjet®3000	WSB	WSB	29 PSI	17 PSI
	SATAjet®4000	WSB	WSB	29 PSI	17 PSI
	SATAjet®4000 RP	1.1 / 1.2 **	1.1 / 1.2 **	26-32 PSI **	17 PSI
Sharpe (Digi-Tell Regulator #U05510)	Razor Waterborne HVLP Part # 289389	289375	1.3	26 PSI	16 PSI
Walcom (Regulator #90105/W)	GENESI GEO HVLP	GEO 1.3 UNI	1.3	29 PSI	17 PSI

